



NDUFA8 Polyclonal Antibody

Catalog No	YP-Ab-02700
Isotype	IgG
Reactivity	Human;Mouse
Applications	WB;IHC;IF;ELISA
Gene Name	NDUFA8
Protein Name	NADH dehydrogenase [ubiquinone] 1 alpha subcomplex subunit 8
Immunogen	The antiserum was produced against synthesized peptide derived from human NDUFA8. AA range:109-158
Specificity	NDUFA8 Polyclonal Antibody detects endogenous levels of NDUFA8 protein.
Formulation	Liquid in PBS containing 50% glycerol, 0.5% BSA and 0.02% sodium azide.
Source	Polyclonal, Rabbit,IgG
Purification	The antibody was affinity-purified from rabbit antiserum by affinity-chromatography using epitope-specific immunogen.
Dilution	WB: 1/500 - 1/2000. IHC: 1/100 - 1/300. ELISA: 1/40000.. IF 1:50-200
Concentration	1 mg/ml
Purity	≥90%
Storage Stability	-20°C/1 year
Synonyms	NDUFA8; NADH dehydrogenase [ubiquinone] 1 alpha subcomplex subunit 8; Complex I-19kD; CI-19kD; Complex I-PGIV; CI-PGIV; NADH-ubiquinone oxidoreductase 19 kDa subunit
Observed Band	22kD
Cell Pathway	Mitochondrion inner membrane ; Peripheral membrane protein . Mitochondrion intermembrane space . Mitochondrion .
Tissue Specificity	Kidney,Lymph,Thalamus,
Function	function:Accessory subunit of the mitochondrial membrane respiratory chain NADH dehydrogenase (Complex I), that is believed to be not involved in catalysis. Complex I functions in the transfer of electrons from NADH to the respiratory chain. The immediate electron acceptor for the enzyme is believed to be ubiquinone.,similarity:Belongs to the complex I NDUFA8 subunit family.,similarity:Contains 2 CHCH domains.,subunit:Complex I is composed of 45 different subunits.,
Background	The protein encoded by this gene belongs to the complex I 19 kDa subunit family. Mammalian complex I is composed of 45 different subunits. This protein has NADH dehydrogenase activity and oxidoreductase activity. It plays an important role in transferring electrons from NADH to the respiratory chain. The immediate electron acceptor for the enzyme is believed to be ubiquinone.



Alternative splicing of this gene results in multiple transcript variants encoding different isoforms. [provided by RefSeq, Dec 2015],

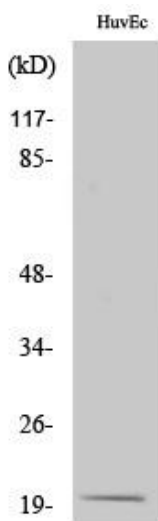
matters needing attention

Avoid repeated freezing and thawing!

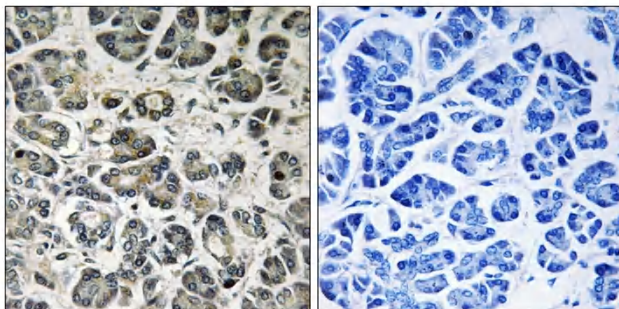
Usage suggestions

This product can be used in immunological reaction related experiments. For more information, please consult technical personnel.

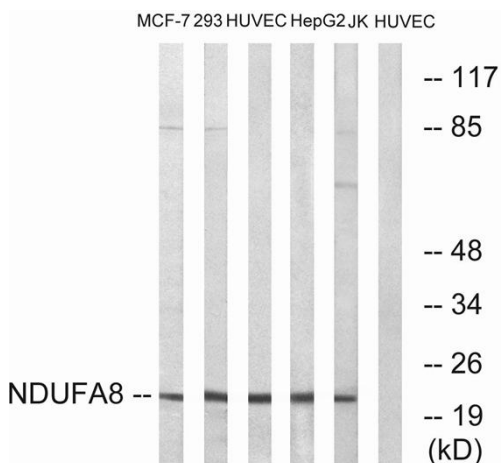
Products Images



Western Blot analysis of various cells using NDUFA8 Polyclonal Antibody diluted at 1:1000



Immunohistochemistry analysis of paraffin-embedded human pancreas tissue, using NDUFA8 Antibody. The picture on the right is blocked with the synthesized peptide.



Western blot analysis of lysates from HUVEC, MCF-7, Jurkat, HepG2, and 293 cells, using NDUFA8 Antibody. The lane on the right is blocked with the synthesized peptide.